

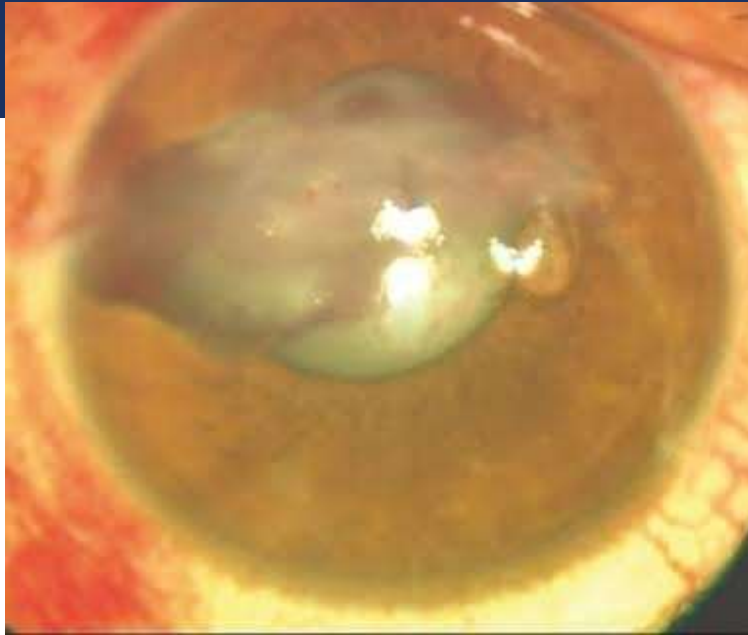
FROM DARKNESS TO LIGHT: THE ROAD TO RECOVERY!

Nancy Hazem M. Zakaria
Third Year Resident

Ophthalmology Department 2019
 Alexandria University

- A 34 yo man presented to the emergency department with history of “being hit in the left eye with broken glass”

	OD	OS
UCVA	I.0	HM
EOM	FMAD	FMAD
IOP	TND	T--
PUPILS	RRR- D&C	Traumatic mydriasis
Lids	free	free
Cornea	clear	Corneal laceration
AC	NDC	Cortical matter
IRIS	NPC	Iris touching the wound
LENS	Clear	Traumatic cataract
FUNDUS	NDV's	Couldn't be assessed



3 MONTHS POST- OPERATIVE: AFTER SUTURE REMOVAL



UCVA: <math><0.01</math>
BCVA: + 10 Lens \rightarrow 0.1

BIOMETRY

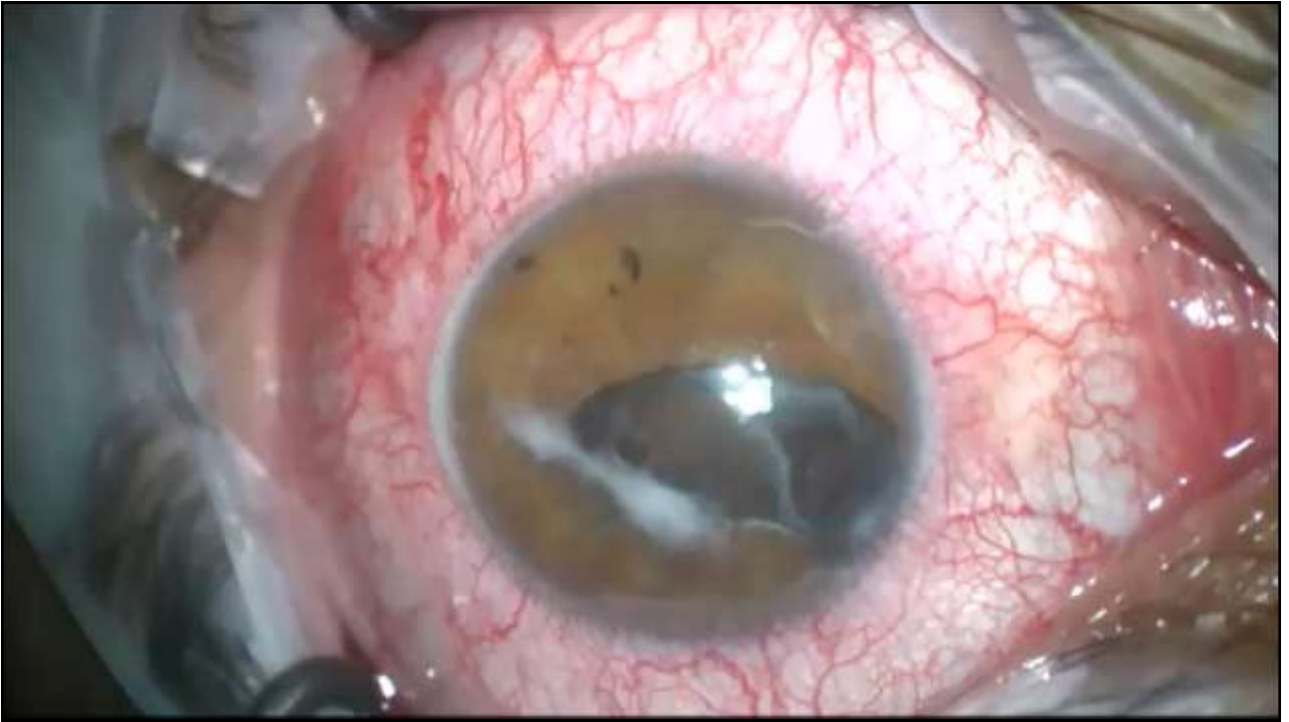
(Multifocal)		OS	
measured manually.		left	
Ax: 22.68 mm (SD = 13 µm) WTW: 10.6 mm			
ACD: ---			
LT: ---		Δ D: +3.30 D @ 53°	
SE: 44.32 D (I)		K2: 46.03 D @ 53°	
K1: 42.73 D @ 143°		VA: ---	
Ref: ---		SIA: +0.20 D @ 0°	
Target ref.: plano			
LS: Aphakic; VS: Vitreous body; LVC: Untreated; LVC mode			
SRK/T		Hoffer® Q	
A const.: 118.20		pACD: +5.08	
ICL (D)	Ref (D)	ICL (D)	Ref (D)
+23.00	-0.70	+23.00	0.63
+22.50	0.34	+22.50	-0.27
+22.00	+0.02	+22.00	+0.08
+21.50	+0.37	+21.50	+0.43
+21.00	+0.72	+21.00	+0.78
+20.50	Emms.	+20.50	Emms.

(Multifocal)		OS	
measured manually.		left	
Ax: 22.68 mm (SD = 13 µm) WTW: 10.6 mm			
ACD: ---			
LT: ---		Δ D: +3.30 D @ 53°	
SE: 44.32 D (I)		K2: 46.03 D @ 53°	
K1: 42.73 D @ 143°		VA: ---	
Ref: ---		SIA: +0.20 D @ 0°	
Target ref.: plano			
LS: Aphakic; VS: Vitreous body; LVC: Untreated; LVC mode			
SRK/T		Hoffer® Q	
A const.: 118.90		pACD: +4.34	
ICL (D)	Ref (D)	ICL (D)	Ref (D)
+21.50	-0.66	+21.50	-0.66
+20.50	-0.43	+21.00	-0.27
+20.00	-0.05	+20.50	+0.10
+19.50	+0.33	+20.00	+0.47
+19.00	+0.70	+19.50	+0.83
+20.44	Emms.	+20.63	Emms.

SURGICAL PLAN

- 1. Tackle the anterior synechiae
- 2. Perform a proper anterior vitrectomy
- 3. Pupilloplasty
- 4. Anterior pupillary artisan





- First follow up (1 day post operative) : Moderate corneal edema VA 0.07
- Second follow up (1 week post operative) : clear cornea

UCVA 0.3

<L>	S	C	A
(- 0.75	-1.75	168)
(- 1.00	-2.00	164)
(- 1.00	-2.00	164)
*	- 1.00	-2.00	164
S. E.		-2.00	/



TAKE HOME MESSAGE...

- **PATIENTS LIVE ON HOPE!**
- **NEVER** forget the retina
- **Good Surgical Plan**
- **Follow up...follow up... FOLLOW UP!**



THANK YOU!

