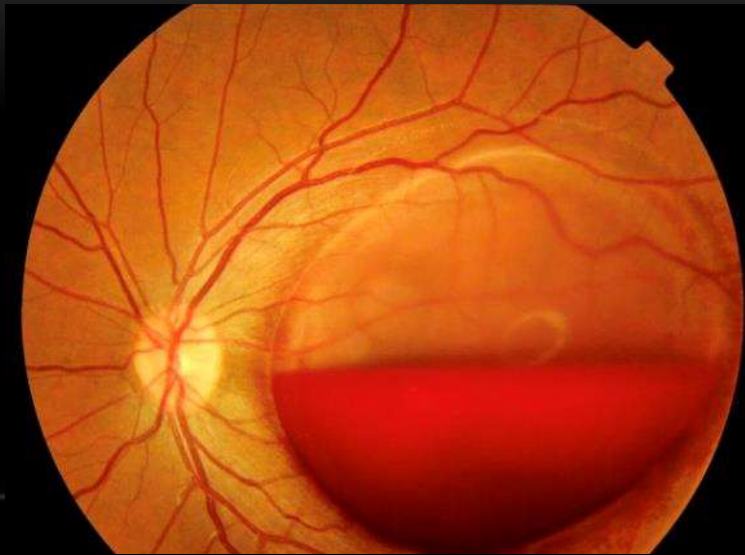


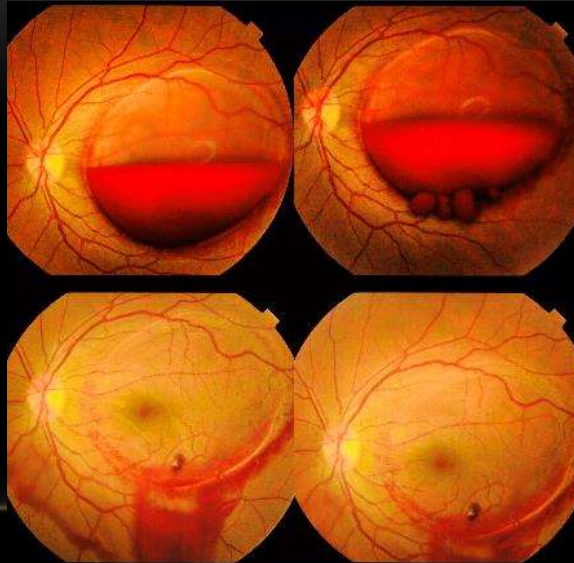
MANAGEMENT OF DIABETIC SUBHYALOID HEMORRHAGE

Sherif Sheta
Professor and VR consultant
Cairo University

SUBHYALOID HGE (VALSALVA)



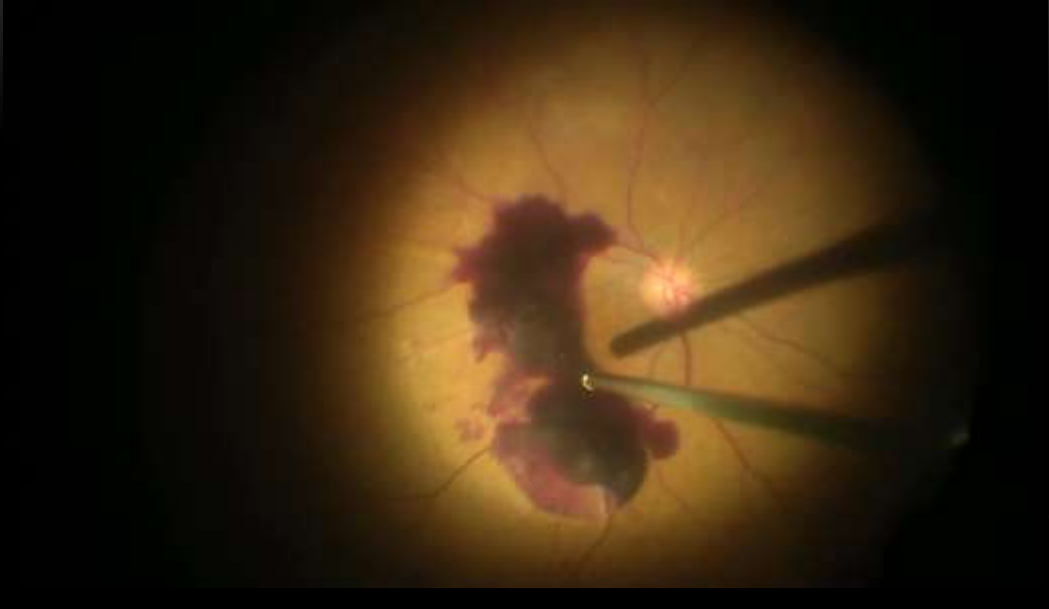
YAG LASER HYALOIDOTOMY

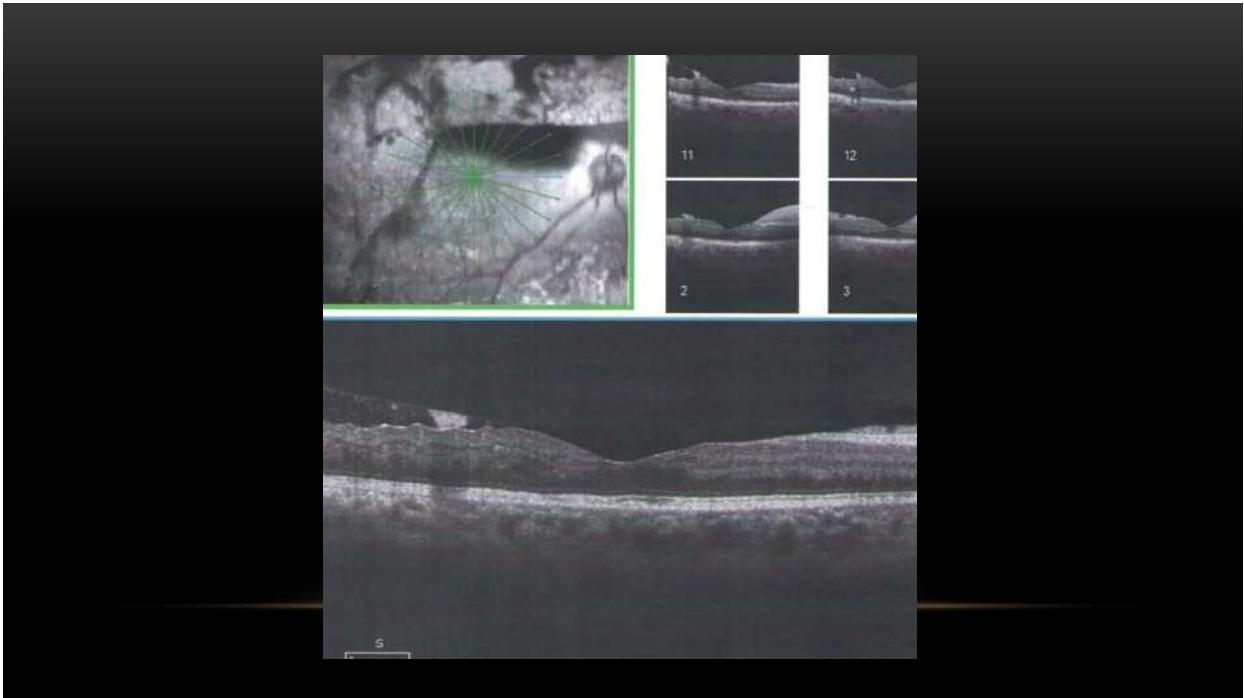
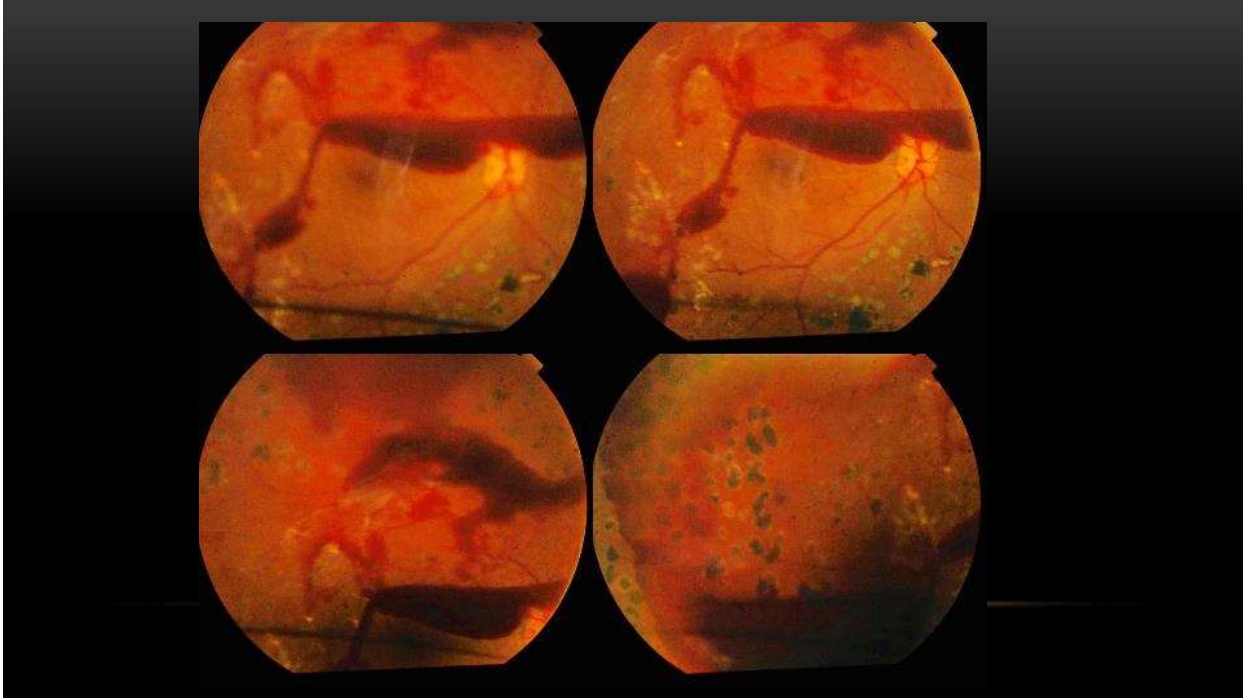


SUB ILM HGE

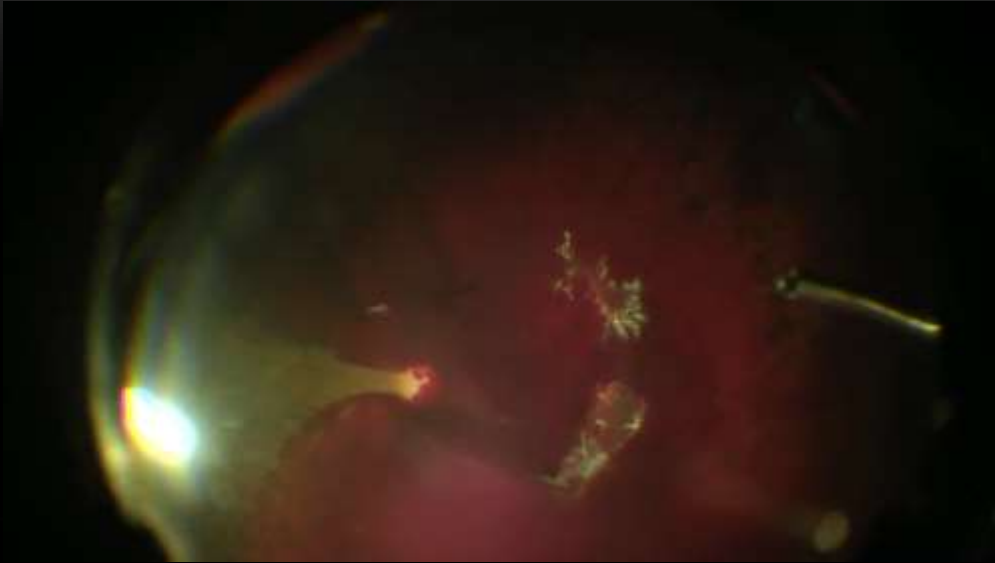


DIABETIC SUBHYALOID HGE





DIABETIC SUBHYALOID HGE



DIABETIC SUBHYALOID HGE TAKE HOME MESSAGE

- Common in diabetic patients due to vitreous contraction and pulling on the fibrovascular connections between the retina and posterior hyaloid.
- Its presence facilitates surgery as it denotes a plane of cleavage.
- YAG laser hyaloidotomy is not effective and may be harmful.
- The posterior hyaloid may be thickened.
- Pulling on the thick PH should be done carefully as it may induce iatrogenic retinal tears due to vitreo-retinal adhesions.

